

NICR

NCDEX Group Company

Weekly Monsoon Report
September 19, 2022



Monsoon 2022

According to the India Meteorological Department, a cyclonic circulation lies over Northwest & adjoining Westcentral Bay of Bengal in lower & middle tropospheric levels. Under its influence, a Low Pressure Area is likely to form over northwest & adjoining westcentral Bay of Bengal off Odisha-West Bengal coasts during next 24 hours. The Monsoon trough lies near its normal position and its eastern ends likely to shift southwards gradually from today, the 19th September, 2022. A cyclonic circulation lies over northeast Uttar Pradesh & neighbourhood in lower tropospheric levels. A Western Disturbance seen as a trough in mid-tropospheric westerlies with its axis in middle tropospheric levels runs roughly along Long.76°E to the north of Lat. 30°N.

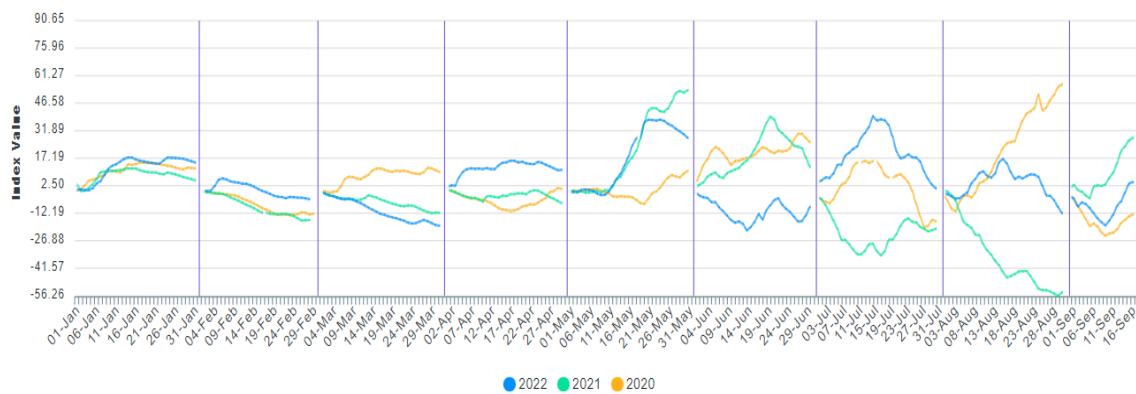
Monsoon Forecast for the week of 19th September to 21st September 2022

- Fairly Widespread/Widespread light/moderate rainfall with isolated heavy falls & thunderstorm/lightning very likely over Odisha during 19th-21st; Andaman & Nicobar Islands on 19th; Jharkhand on 20th; Gangetic West Bengal on 20th & 21st; Sub-Himalayan West Bengal & Sikkim on 22nd; Chhattisgarh, Vidarbha and East Madhya Pradesh during 20th-23rd; West Madhya Pradesh on 22nd & 23rd September, 2022. Isolated very heavy rainfall also likely over Odisha during 19th-21st September, 2022.
- Fairly Widespread light/moderate rainfall with isolated heavy falls & thunderstorm/lightning very likely over Coastal Andhra Pradesh & Yanam and Telangana during 19th-21st September, 2022.
- Scattered light/moderate rainfall with isolated thunderstorm/lightning very likely over West Uttar Pradesh on 19th; Uttarakhand and East Uttar Pradesh during next 5 days.
- Fairly Widespread light/moderate rainfall with isolated heavy falls & thunderstorm/lightning very likely over Assam & Meghalaya during 19th-21st September, 2022.

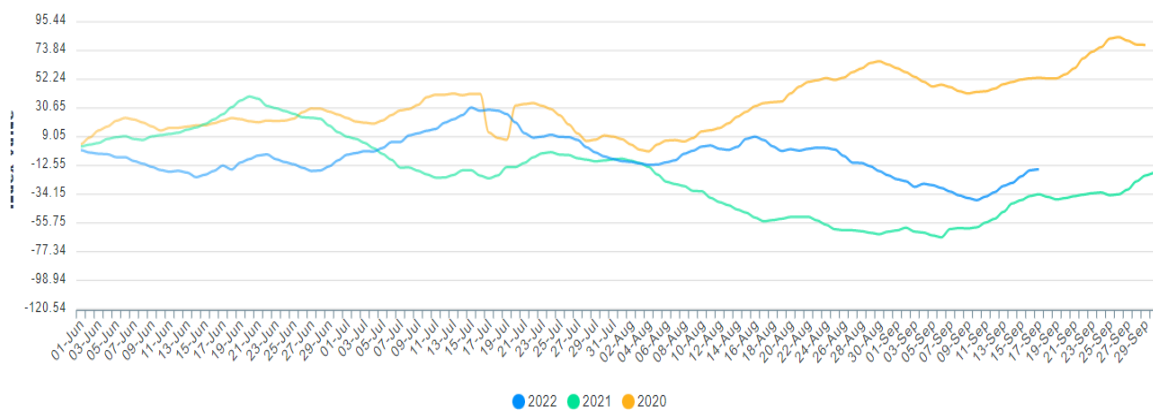
NCDEX Weather Indices

NCDEX Weather Indices Weather indices are based on the occurrence of a weather event. The underlying assumption is that certain weather events such as flood / drought are correlated with crop losses and are therefore income risks. The key advantages to this kind of indices are that the trigger events e.g. deficit rainfall can be independently verified and therefore not subject to the possibilities of manipulation. These indices capture the deviation in rainfall from normal value. NCDEX Rainfall Indices, India's first nation-wide rainfall performance indicators. Indian Monsoon Index tracks the monsoon for the period of 1st June to 30th September every year and Indian Rain Index which tracks the month wise performance of the rainfall across the country. Indian Monsoon Index are calculated for the monsoon period i.e. from 1st June to 30th September every year. On 1st of June every year the index will be reset to zero.

Indian Rain Index



Indian Monsoon Index



Outlook for Rainfall

19-September-2022

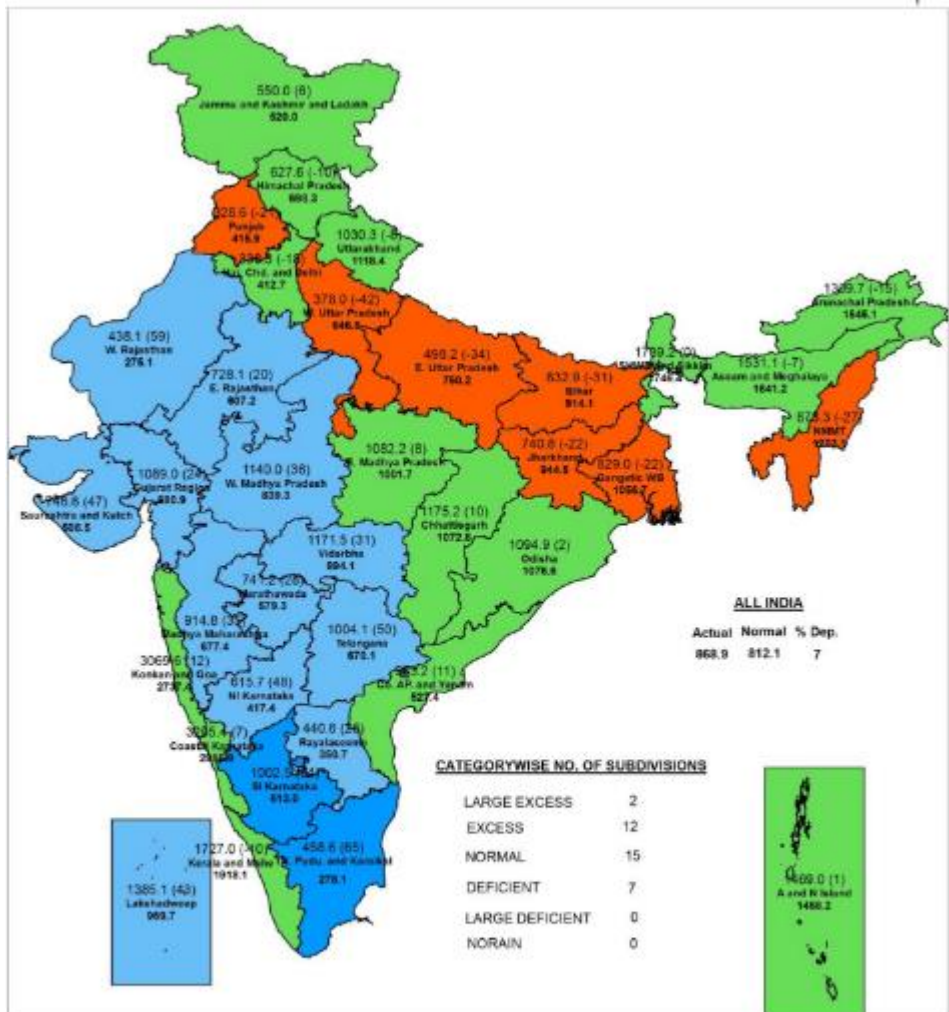
Met-Sub-Division	19-Sep Today	20Sep Tue	21Sep Wed	22Sep Thu	23Sep Fri
1. Andaman & Nicobar Islands	FWS	FWS	FWS	FWS	WS
2. Arunachal Pradesh	FWS	FWS	FWS	FWS	WS
3. Assam & Meghalaya	FWS	FWS	FWS	FWS	WS
4. N. M. M. & T.	FWS	FWS	FWS	FWS	WS
5. S.H. West Bengal & Sikkim	SCT	SCT	FWS	FWS	FWS
6. Gangetic West Bengal	FWS	FWS	FWS	FWS	WS
7. Odisha	WS	WS	WS	FWS	WS
8. Jharkhand	FWS	WS	WS	FWS	WS
9. Bihar	SCT	SCT	SCT	FWS	WS
10. East Uttar Pradesh	SCT	FWS	FWS	FWS	WS
11. West Uttar Pradesh	ISOL	ISOL	ISOL	ISOL	SCT
12. Uttarakhand	SCT	SCT	SCT	SCT	FWS
13. Haryana, Chd & Delhi	DRY	DRY	DRY	DRY	DRY
14. Punjab	DRY	DRY	DRY	DRY	DRY
15. Himachal Pradesh	ISOL	SCT	SCT	ISOL	ISOL
16. J & K and Ladakh	DRY	ISOL	ISOL	ISOL	ISOL
17. West Rajsthan	DRY	DRY	DRY	DRY	DRY
18. East Rajasthan	ISOL	ISOL	ISOL	ISOL	ISOL
19. West Madhya Pradesh	ISOL	ISOL	SCT	FWS	WS
20. East Madhya Pradesh	SCT	FWS	WS	WS	WS
21. Gujarat Region	ISOL	ISOL	ISOL	ISOL	ISOL
22. Saurashtra & Kutch	ISOL	ISOL	DRY	DRY	DRY
23. Konkan & Goa	FWS	FWS	FWS	WS	WS
24. Madhya Maharashtra	SCT	SCT	SCT	FWS	WS
25. Marathwada	SCT	SCT	FWS	FWS	WS
26. Vidharbha	SCT	FWS	FWS	FWS	WS
27. Chhattisgarh	FWS	WS	WS	FWS	WS
28. Coastal A. P. & Yanam	FWS	FWS	FWS	FWS	FWS
29. Telangana	FWS	FWS	FWS	SCT	SCT
30. Rayalaseema	ISOL	ISOL	ISOL	ISOL	ISOL
31. T.N.,Puducherry & Karaikal	SCT	ISOL	ISOL	ISOL	ISOL
32. Coastal Karnataka	SCT	SCT	SCT	SCT	SCT
33. North Interior Karnataka	ISOL	ISOL	ISOL	ISOL	ISOL
34. South Interior Karnataka	SCT	ISOL	ISOL	ISOL	ISOL
35. Kerala & Mahe	SCT	SCT	SCT	SCT	SCT
36. Lakshadweep	SCT	SCT	SCT	SCT	SCT

% Station Reporting Rainfall

% Stations	Category	% Stations	Category
76-100	Widespread (WS/Most Places)	26-50	Scattered (SCT/ A Few Places)
51-75	Fairly Widespred (FWS/ Many Places)	1-25	Isolated (ISOL)
No Rain	Dry		

Source: IMD, New Delhi

Subdivision wise Cumulative Rainfall (as on 18 September 2022)

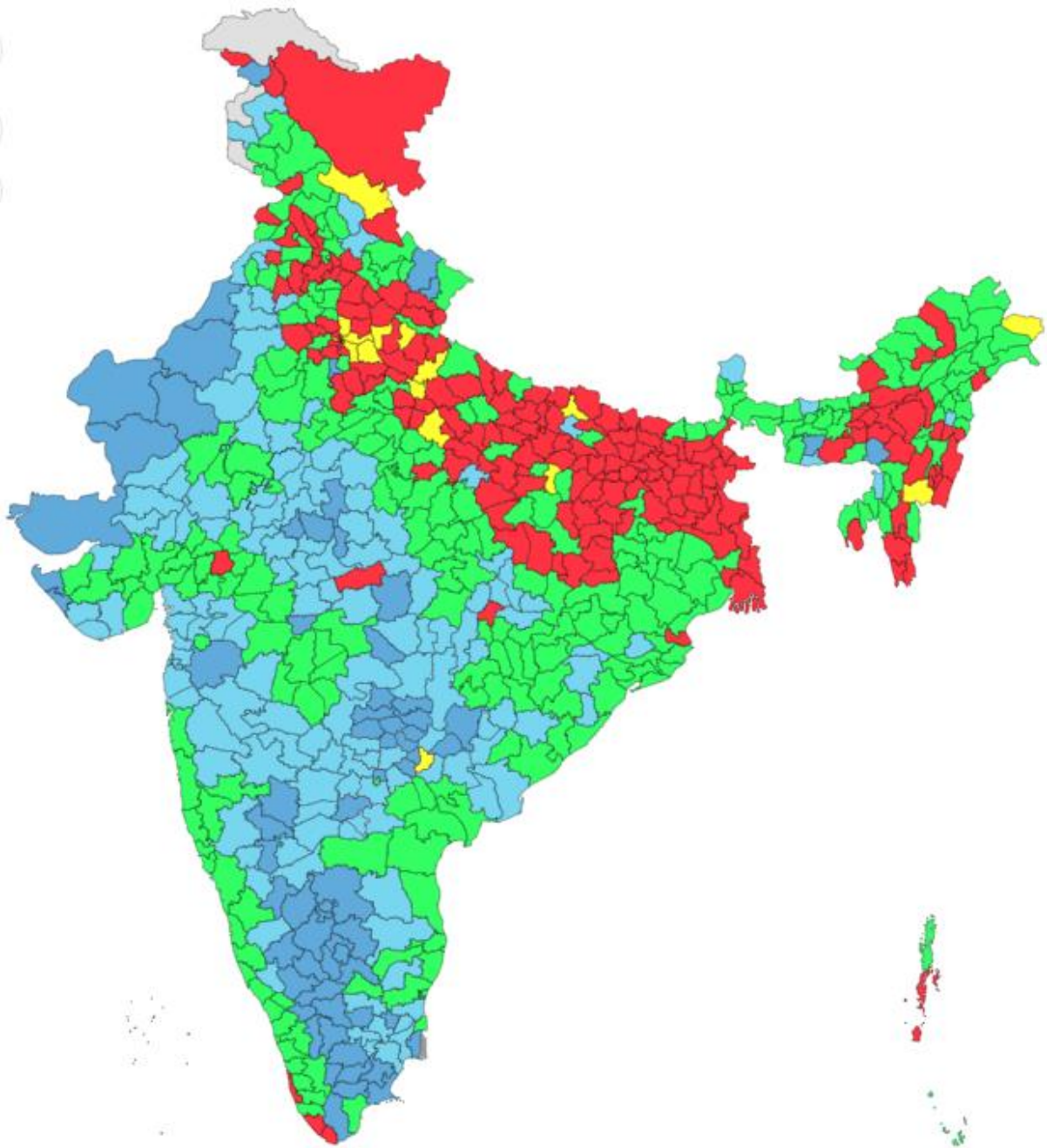


Legend
 Large Excess [80% or more] Excess [20% to 89%] Normal [-19% to 19%] Deficient [-59% to -20%] Large Deficient [-89% to -40%] No Rain [-100%] No Data

NOTES :
 a) Rainfall figures are based on operation data.
 b) Small figures indicate actual rainfall (mm), while bold figures indicate Normal rainfall (mm).
 c) Percentage Departures of rainfall are shown in brackets.

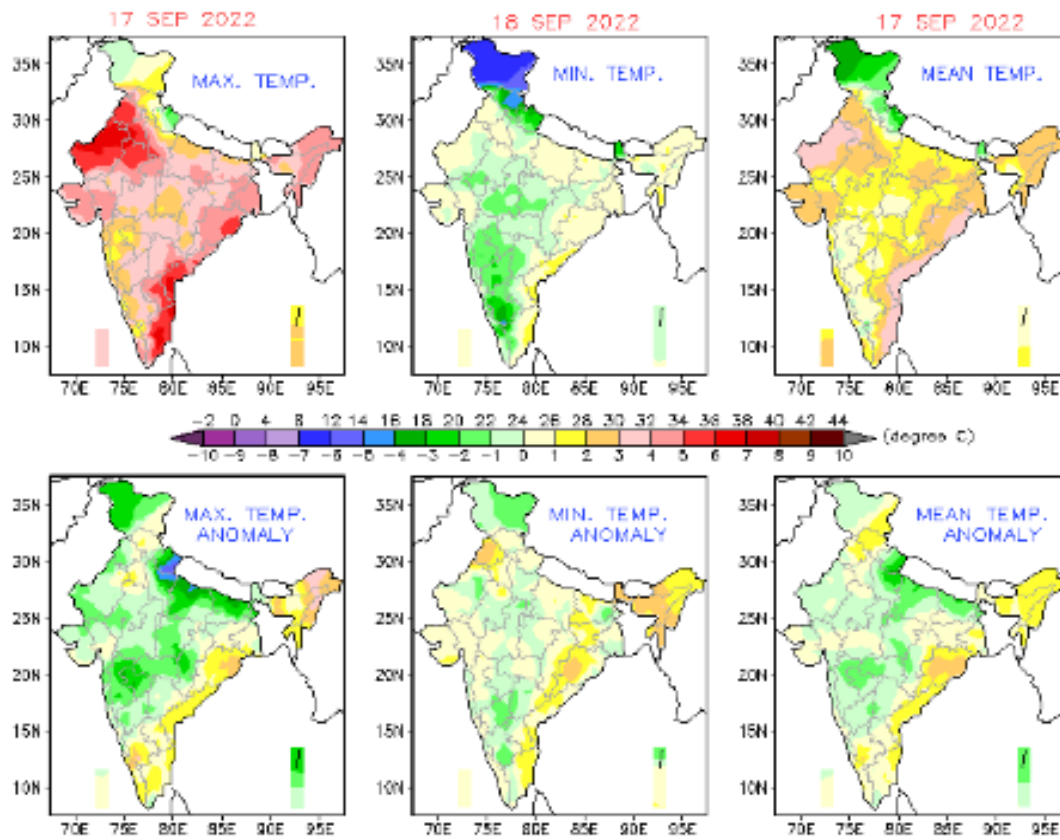
Source: IMD, New Delhi

District wise Cumulative Rainfall (as on 14 September 2022)



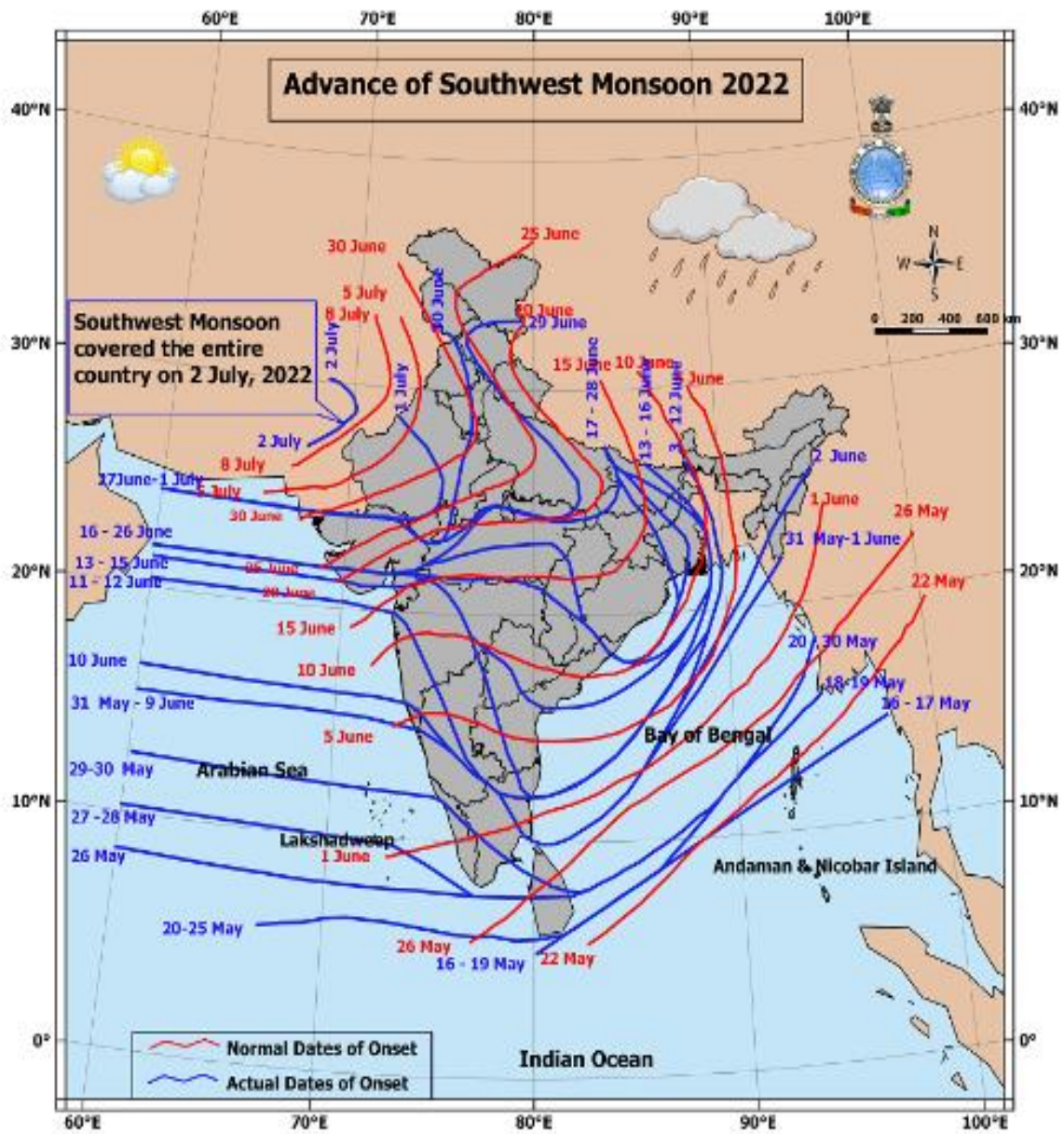
Source: IMD, New Delhi

Actual Temperature



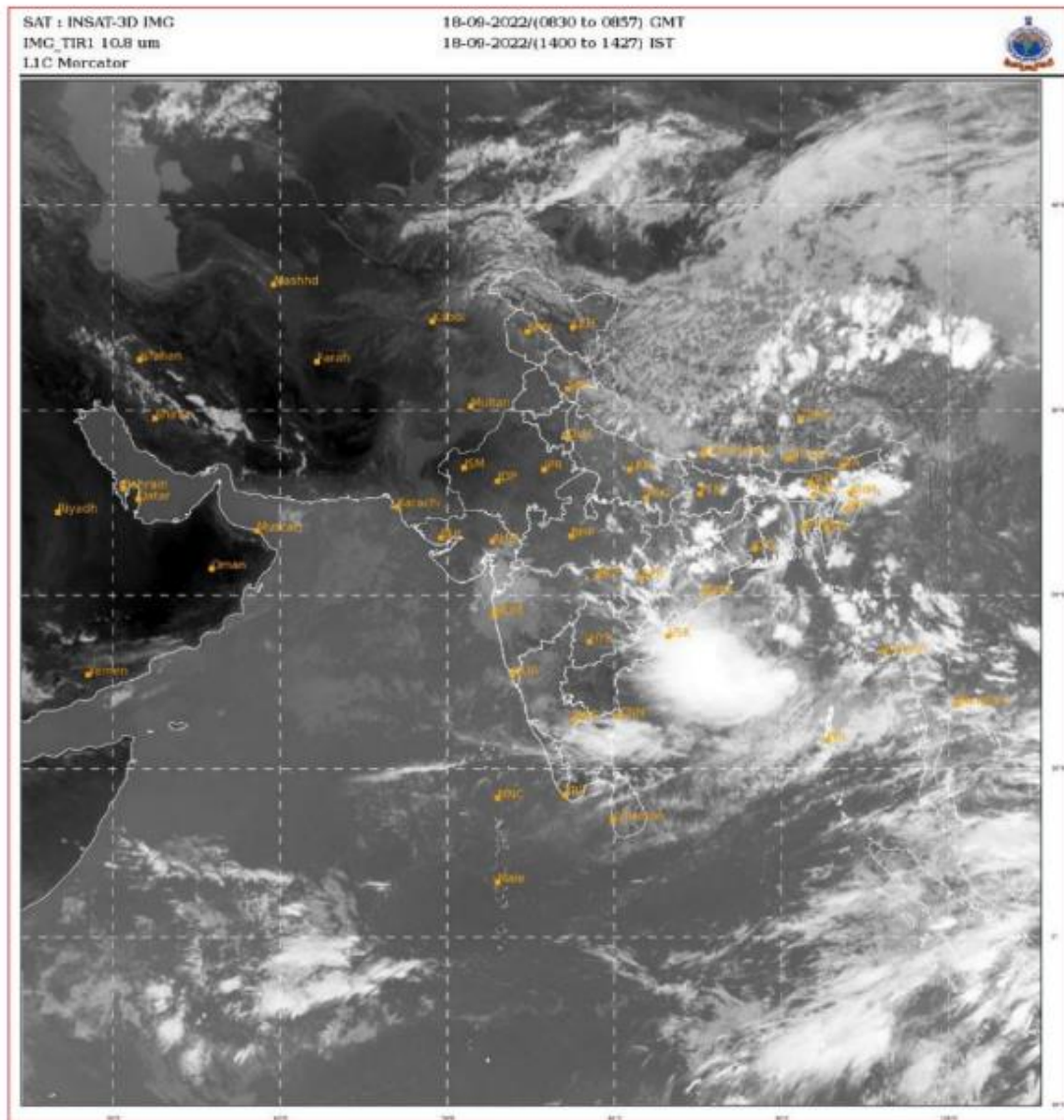
Source: IMD, New Delhi

Advancement of Monsoon 2022



Source: IMD, New Delhi

Cloud Status



Source: IMD, New Delhi

Kharif Crop Sowing Progress

As per the reports published by the Ministry of Agriculture and Farmer Welfare (MoAFW), total acreage is down by 4.06% in pulses, up by 4.17% in coarse cereals, and down by 0.69% in oilseeds and up by 7.54% for cotton as compared to the sown area seen during same period of last year.

As on 16 Sept 2022, status of crops sowing:

(in Lakh hectare)

S. No.	Crop	Areas Sown	Area Sown	Net Change	% change
		2022	2021	2021	2021
1	Total Pulses	131.92	137.50	-5.58	-4.06
(i)	Arhar	45.73	47.95	-2.22	-4.62
(ii)	Kulthi	0.34	0.66	-0.32	-48.71
(iii)	Urad	37.43	38.94	-1.50	-3.86
(iv)	Moong	33.26	34.64	-1.38	-3.99
(v)	Other Pulses	15.15	15.31	-0.16	-1.04
2	Total Coarse Cereals	181.31	174.05	7.26	4.17
(i)	Jowar	13.96	14.64	-0.68	-4.62
(ii)	Bajra	69.89	63.29	6.60	10.42
(iii)	Ragi	8.56	9.59	-1.03	-10.75
(iv)	Maize	82.99	81.26	1.73	2.12
(v)	Small Millets	5.91	5.27	0.64	12.21
3	Total Oilseeds	190.91	192.23	-1.32	-0.69
(i)	Groundnut	45.49	49.08	-3.59	-7.32
(ii)	Sunflower	2.01	1.53	0.48	31.75
(iii)	Sesamum	13.12	13.07	0.05	0.37
(iv)	Niger	0.98	0.86	0.12	14.33
(v)	Castor	8.49	6.79	1.70	25.06
(vi)	Soyabean	120.70	120.78	-0.08	-0.06
(vii)	Other Oilseeds	0.12	0.13	0	-3.88
4	Total Jute and Mesta	6.96	7.00	-0.05	-0.66
5	Cotton	127.15	118.24	8.91	7.54

Source: Ministry of Agriculture & Farmers' Welfare.

For in-depth customized research reports on agri-commodities please connect with us at: helpdesk.nicr@ncdex.com

Learn more about NCDEX Institute of Commodity Markets and Research (NICR) at:
<http://www.nicrindia.in>

Address for Communication:

Avanta Business Center, 12th floor, Ambadeep Building, 14, KG Marg, New Delhi – 110001, India.

Free No: 1800 26 62339

Email: admindelhi.nicr@ncdex.com ; helpdesk.nicr@ncdex.com

Registered Office:

Akruti Corporate Park, 1st Floor, Near G.E.Garden, L.B.S. Marg, Kanjurmarg (West),
Mumbai - 400 078. India

Tel: +91-22-66406789; Fax: +91-22-66406899; Toll Free No: 1800 26 62339

Email: askus@ncdex.com

Corporate Identity No. (CIN) of NICR is U74900MH2007NPLC174229.

Disclaimer

This Report is for general information of the recipients. The views and opinions expressed in this document may or may not match the views of the reader. It does not constitute a personal recommendation or take into account the particular investment objectives, financial situations, or other needs of the reader. This document is not intended to be and must not be taken as the basis for any investment decision. It should be noted that the information contained herein is from publicly available data or other sources believed to be reliable. We are not soliciting any action based upon this material. Neither NICR, nor any person connected with it, accepts any liability arising from the use of this document.